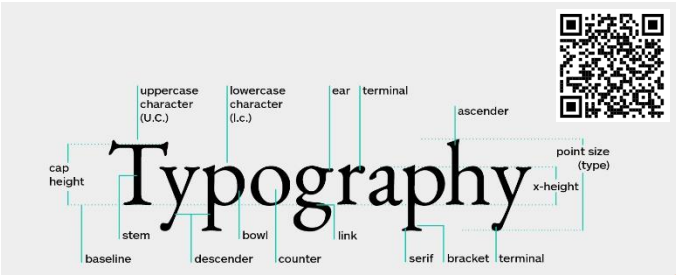
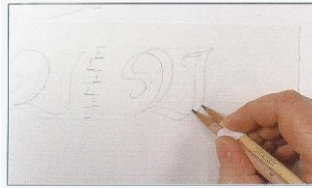


**Materials:**  
Card  
Paper  
Compliant materials



**The Colour Wheel**



**STEP 1** Tape two pencils together to create a tool for drawing large, unfilled letters. Make a pen-width scale, as you have with a nib, by using the width of the pencil tips. To achieve a desired width, adjust the angle of the pencil tips to an imaginary horizontal base line. Then outline your Gothic letter.



**Tools / Machinery and Equipment**

**Marking Out:**

- Pair of Compasses
- Pencil
- Ruler 30cm/300mm
- Template

**Cutting:**

- Craft knife
- Cutting Mat
- Pair of scissors
- Rotary cutter
- Safety rule

**Applying Colour (Rendering):**

- Acrylic Paint
- Coloured Felt Tipped pens
- Coloured pencils
- Graphite pencils
- Tools and Equipment link
- Technology Student



**Key Skills:**

- Accuracy
- Analysis
- Design
- Iterative Design
- Layout
- Line weight
- Measuring
- Rendering
- Sequencing

**Manufacture:**

- How to videos
- Step by step instructions

**LINKS – Science:**

- Renewable
- Sustainable
- 6R's



Links – Art  
Illuminated manuscripts

**Research:**

**Internet**

**Key word search**



- (1) Know where to begin
- (2) Getting good sources
- (3) Evaluating for Credibility
- (4) Compiling and saving your resources
- (5) Use the research

**Existing products:**

Internet (secondary)  
**RESEARCH**

**LINKS – History:**

- Design movements
- Designers
- Design Styles

**Materials**



Download the PDF' History



**LINKS - Mathematics:**

- Addition
- Converting measurements – cm to mm
- Division
- Multiplication
- Subtraction
- Arc
- Circumference
- Diameter
- Radius
- Symmetry / Symmetrical



**Health & Safety:**

**MUST use a cutting mat with a craft knife**  
**SHOULD use a safety rule for straight cuts**  
**ALWAYS have your hand ABOVE the knife blade when cutting**

