

ART A LEVEL

INDUCTION WORKSHOP



What the course entails....



- The first component is a Personal Investigation which comprises of two major elements: supporting studies and practical work. You will create a sketchbook and A1 sheets of development work and outcomes based on themes and ideas developed from personal starting points. Also included is a written element(Personal Study) of at least 1000 words. [This whole component is worth 60% of your grade.](#)
- The second component is an externally set assignment. You will be issued with your exam topic in February and then build a project around one of the starting points. The final piece/s will be produced in exam conditions. The topic for the exam changes each year. The exam itself is 15 hours of sustained focus. [This is worth 40% of a your grade.](#)

TODAY'S ACTIVITIES..... EXPRESS, EXPLORE, EXPERIMENT AND MOST IMPORTANTLY ENJOY!!!!

ACTIVITY 1

CREATE AN
EXPRESSIVE PIECE
EXPLORING THE
TECHNIQUE OF
PIPING WITH PAINT



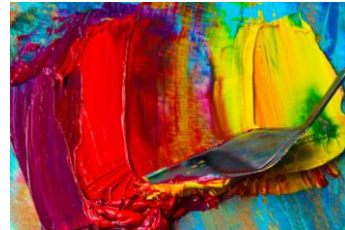
ACTIVITY 2

EASEL DRAWING
CHOOSE AN
OBJECT DO AN
OBSERVATION
DRAWING. GO
STRAIGHT IN
WITH A
GRAPHITE
CRAYON AND
PASTELS



ACTIVITY 3

USING PALETTE
KNIVES TO
CREATE TEXTURE



ACTIVITY 4

EXPERIMENT WITH
INKS AND
MARBLING TO
CREATE
COLOURFUL
TEXTURES



ACTIVITY 5

EXPLORE THE
TECHNIQUE OF
BATIK





**CREATE A CONCERTINA
BOOK BASED ON
TEXTURES AND NEW
TECHNIQUES.
GIVE IT THE TITLE-
EXPRESSION**

SUMMER PROJECT

MAKE A CONCERTINA BOOKLET

